



Certificate of Analysis

QA SAMPLE - INFORMATIONAL ONLY

1 of 3

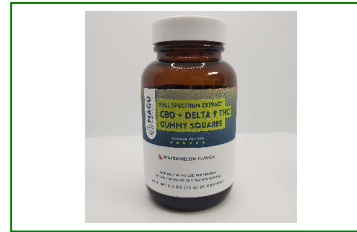
ICAL ID: 20230502-022
 Sample: CA230821-022-051
 Full Spectrum, Vegan 10mg Delta-9 THC Gummy Squares, 200mg Total, Watermelon, 20ct.
 Strain: Full Spectrum, Vegan 10mg Delta-9 THC Gummy Squares, 200mg Total, Watermelon, 20ct.
 Category: Ingestible
 Type: Other

Alivic Enterprise LLC
 Lic. #
 3050 Zaharias Dr.
 Orlando, FL 32837
 Lic. #

Batch#: DK21-D0808
 Batch Size Collected:
 Total Batch Size:
 Collected: 08/21/2023; Received: 08/21/2023
 Completed: 08/21/2023

Moisture	Δ9-THC	CBD	Total Cannabinoids	Total Terpenes
NT	180.91 mg/unit	1,882.97 mg/unit	2,367.87 mg/unit	NT
Water Activity				
NT	9.05 mg/serving	94.15 mg/serving	118.39 mg/serving	

Summary
 Batch Cannabinoids SOP Used: POT-PREP-002 High Date Tested: 05/04/2023 Complete Complete



Scan to see results

Cannabinoid Profile

1 Unit = container, 69.7 g. 20 serving(s) per container.

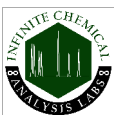
Analyte	LOQ (mg/g)	LOD (mg/g)	%	mg/g	mg/unit	Analyte	LOQ (mg/g)	LOD (mg/g)	%	mg/g	mg/unit
THCa	0.1156	0.0385	ND	ND	ND	CBGa	0.0416	0.0139	ND	ND	ND
Δ9-THC	0.0268	0.0089	0.260	2.60	180.91	CBG	0.0140	0.0047	0.070	0.70	48.79
Δ8-THC	0.0376	0.0125	0.057	0.57	39.59	CBN	0.0141	0.0047	0.022	0.22	15.61
THCV	0.0167	0.0056	0.007	0.07	4.53	Total THC			0.32	3.16	220.50
CBDa	0.0441	0.0147	ND	ND	ND	Total CBD			2.70	27.02	1882.97
CBD	0.0224	0.0075	2.702	27.02	1882.97	Total			3.40	33.97	2367.87
CBDV	0.0115	0.0038	0.095	0.95	66.42						
CBC	0.0684	0.0228	0.185	1.85	129.05						

Total THC=THCa * 0.877 + d9-THC + d8-THC; Total CBD = CBDa * 0.877 + CBD. LOD= Limit of Detection, LOQ= Limit of Quantitation, ND= Not Detected, NR= Not Reported. Potency is reported on a dry weight basis. Instrumentation and analysis SOPs used: Cannabinoids:UHPLC-DAD(POT-INST-005),Moisture:Moisture Analyzer(MOISTURE-001),Water Activity:Water Activity Meter(WA-INST-002), Foreign Material:Microscope(FOREIGN-001). Density measured at 19-24 °C, Water Activity measured at 0-90% RH. All QA submitted by the client, All CA State Compliance sampled using SAMPL-SOP-001.

Terpene Profile

Analyte	LOQ (mg/g)	LOD (mg/g)	%	mg/g	Analyte	LOQ (mg/g)	LOD (mg/g)	%	mg/g
---------	------------	------------	---	------	---------	------------	------------	---	------

NR= Not Reported (no analysis was performed), ND= Not Detected (the concentration is less than the Limit of Detection (LOD)). Analytical instrumentation used: HS-GC-MS; samples analyzed according to SOP TERP-INST-003.



Infinite Chemical Analysis Labs
 8312 Miramar Mall
 San Diego, CA
 (858) 623-2740
 www.infiniteCAL.com
 Lic# C8-0000047-LIC

Josh M Swider

Josh Swider
 Lab Director, Managing Partner
 08/21/2023

Confident Cannabis
 All Rights Reserved
 support@confidentcannabis.com
 (866) 506-5866
 www.confidentcannabis.com



This product has been tested by Infinite Chemical Analysis, LLC using valid testing methodologies and a quality system as required by state law. All LQC samples were performed and met the prescribed acceptance criteria in 16 CCR section 15730, pursuant to 16 CCR section 15726(e)(13). Values reported relate only to the product tested. Infinite Chemical Analysis, LLC makes no claims as to the efficacy, safety or other risks associated with any detected or non-detected levels of any compounds reported herein. This Certificate shall not be reproduced except in full, without the written approval of Infinite Chemical Analysis, LLC.



Certificate of Analysis

QA SAMPLE - INFORMATIONAL ONLY

2 of 3

ICAL ID: 20230502-022
Sample: CA230821-022-051
Full Spectrum, Vegan 10mg Delta-9 THC Gummy Squares, 200mg Total, Watermelon, 20ct.
Strain: Full Spectrum, Vegan 10mg Delta-9 THC Gummy Squares, 200mg Total, Watermelon, 20ct.
Category: Ingestible
Type: Other

Alivic Enterprise LLC
Lic. #
3050 Zaharias Dr.
Orlando, FL 32837
Lic. #

Batch#: DK21-D0808
Batch Size Collected:
Total Batch Size:
Collected: 08/21/2023; Received: 08/21/2023
Completed: 08/21/2023

Residual Solvent Analysis

Category 1	LOQ	LOD	Limit	Status	Category 2	LOQ	LOD	Limit	Status	Category 2	LOQ	LOD	Limit	Status
------------	-----	-----	-------	--------	------------	-----	-----	-------	--------	------------	-----	-----	-------	--------

NR= Not Reported (no analysis was performed), ND= Not Detected (the concentration is less then the Limit of Detection (LOD)). Analytical instrumentation used: HS-GC-MS; samples analyzed according to SOP RS-INST-003.

Heavy Metal Screening

	LOQ	LOD	Limit	Status
--	-----	-----	-------	--------

NR= Not Reported (no analysis was performed), ND= Not Detected (the concentration is less then the Limit of Detection (LOD)). Analytical instrumentation used: ICP-MS; samples analyzed according to SOP HM-INST-003.

Microbiological Screening

	Limit	Result	Status
--	-------	--------	--------

ND=Not Detected. Analytical instrumentation used:qPCR; samples analyzed according to SOP MICRO-INST-001.



Infinite Chemical Analysis Labs
8312 Miramar Mall
San Diego, CA
(858) 623-2740
www.infiniteCAL.com
Lic# C8-000047-LIC

Josh M Swider

Josh Swider
Lab Director, Managing Partner
08/21/2023

Confident Cannabis
All Rights Reserved
support@confidentcannabis.com
(866) 506-5866
www.confidentcannabis.com



This product has been tested by Infinite Chemical Analysis, LLC using valid testing methodologies and a quality system as required by state law. All LQC samples were performed and met the prescribed acceptance criteria in 16 CCR section 15730, pursuant to 16 CCR section 15726(e)(13). Values reported relate only to the product tested. Infinite Chemical Analysis, LLC makes no claims as to the efficacy, safety or other risks associated with any detected or non-detected levels of any compounds reported herein. This Certificate shall not be reproduced except in full, without the written approval of Infinite Chemical Analysis, LLC.



Certificate of Analysis

QA SAMPLE - INFORMATIONAL ONLY

3 of 3

ICAL ID: 20230502-022
Sample: CA230821-022-051
Full Spectrum, Vegan 10mg Delta-9 THC Gummy Squares, 200mg Total, Watermelon, 20ct.
Strain: Full Spectrum, Vegan 10mg Delta-9 THC Gummy Squares, 200mg Total, Watermelon, 20ct.
Category: Ingestible
Type: Other

Alivic Enterprise LLC
Lic. #
3050 Zaharias Dr.
Orlando, FL 32837
Lic. #

Batch#: DK21-D0808
Batch Size Collected:
Total Batch Size:
Collected: 08/21/2023; Received: 08/21/2023
Completed: 08/21/2023

Chemical Residue Screening

Category 1	LOQ	LOD	Status	Mycotoxins	LOQ	LOD	Limit	Status
------------	-----	-----	--------	------------	-----	-----	-------	--------

Category 2	LOQ	LOD	Limit	Status	Category 2	LOQ	LOD	Limit	Status
------------	-----	-----	-------	--------	------------	-----	-----	-------	--------

Other Analyte(s):

NR= Not Reported (no analysis was performed), ND= Not Detected (the concentration is less than the Limit of Detection (LOD)). Analytical instrumentation used: LC-MS-MS & GC-MS-MS; samples analyzed according to SOPs PESTMYCO-LC-INST-004 and PEST-GC-INST-003.



Infinite Chemical Analysis Labs
8312 Miramar Mall
San Diego, CA
(858) 623-2740
www.infiniteCAL.com
Lic# C8-000047-LIC

Josh M Swider

Josh Swider
Lab Director, Managing Partner
08/21/2023

Confident Cannabis
All Rights Reserved
support@confidentcannabis.com
(866) 506-5866
www.confidentcannabis.com



This product has been tested by Infinite Chemical Analysis, LLC using valid testing methodologies and a quality system as required by state law. All LQC samples were performed and met the prescribed acceptance criteria in 16 CCR section 15730, pursuant to 16 CCR section 15726(e)(13). Values reported relate only to the product tested. Infinite Chemical Analysis, LLC makes no claims as to the efficacy, safety or other risks associated with any detected or non-detected levels of any compounds reported herein. This Certificate shall not be reproduced except in full, without the written approval of Infinite Chemical Analysis, LLC.